

A black track lighting system is mounted on a white ceiling. Two spotlights are visible, one pointing downwards and one pointing to the side. A large green rectangular overlay is positioned on the left side of the image, containing the word 'TRACK' in white capital letters.

TRACK



TRACK

01 3 CIRCUIT TRACK - 1.0M



Code:	LM-T31-*
Circuits:	3
Voltage:	240v
Amps:	16A
IP Rating:	IP20
Dimensions:	1000 x 35 x 35 mm



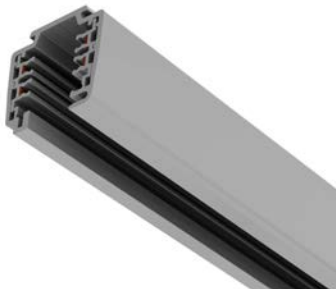
02 3 CIRCUIT TRACK - 2.0M



Code:	LM-T32-*
Circuits:	3
Voltage:	240v
Amps:	16A
IP Rating:	IP20
Dimensions:	2000 x 35 x 35 mm



03 3 CIRCUIT TRACK - 3.0M



Code:	LM-T33-*
Circuits:	3
Voltage:	240v
Amps:	16A
IP Rating:	IP20
Dimensions:	3000 x 35 x 35 mm



04 LIVE END



Code:	LM-CU3-*
Circuits:	3
Voltage:	240v
Amps:	16A
IP Rating:	IP20
Dimensions:	86 x 35 x 35mm



05 DEAD END



Code:	LM-EC3-*
Circuits:	-
Voltage:	-
Amps:	-
IP Rating:	-
Dimensions:	35 x 35 x 2mm



07 RIGHT CORNER



Code:	LM-RC3-*
Circuits:	3
Voltage:	240v
Amps:	16A
IP Rating:	IP20
Dimensions:	84 x 35 x 35mm



06 LEFT CORNER



Code:	LM-LC3-*
Circuits:	3
Voltage:	240v
Amps:	16A
IP Rating:	IP20
Dimensions:	84 x 35 x 35mm



08 X CONNECTOR



Code:	LM-XC3-*
Circuits:	3
Voltage:	240v
Amps:	16A
IP Rating:	IP20
Dimensions:	132 x 35 x 35mm



09 T CONNECTOR



Code:	LM-TC3-*
Circuits:	3
Voltage:	240v
Amps:	16A
IP Rating:	IP20

Dimensions: 132 x 35 x 35mm



11 MIDDLE CONNECTOR



Code:	LM-MC3-*
Circuits:	3
Voltage:	240v
Amps:	16A
IP Rating:	IP20

Dimensions:



10 MINI CONNECTOR



Code:	LM-JU3-*
Circuits:	3
Voltage:	240v
Amps:	16A
IP Rating:	IP20

Dimensions: 84 x 30 x 30mm



12 60 DEGREE CONNECTOR



Code:	LM-AL3-*
Circuits:	3
Voltage:	240v
Amps:	16A
IP Rating:	IP20

Dimensions:

