

## LINEA

NEW



... indoor, surface-mounted, plastic.

### USE

The Linea light fitting line can be used as a comprehensive solution for lighting of office buildings, schools, hospitals, libraries, as well as individual lighting of flat interiors, corridors, sanitary and welfare facilities.

Thanks to its high luminous efficiency and low electricity consumption it is a suitable replacement for light fittings with fluorescent tubes.

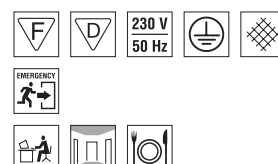
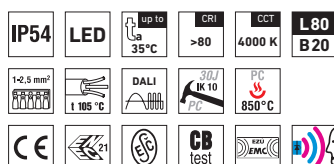
### ADVANTAGES

- Light fitting protection IP54
- Maximum ambient temperature up to  $t_a = 35^\circ\text{C}$
- Lifetime: 50,000 hours / L80B20
- Diffuser: translucent polycarbonate (PC) = high light transmission
- Body: white polycarbonate (PC) = high mechanical resistance
- Up to 45 % lower electricity consumption when compared to tubes T5
- In DALI version: possibility of constant luminous flux for whole lifetime (CLO)
- Standard model - CRI > 80: 4000 K
- At request CRI > 80: 3000 K, 5000 K, 6500 K, CRI > 90: 3000 K, 4000 K
- It can be delivered in dimmable or emergency version
- Certification: ESČ, ENEC, CB

T A

Č R

Technology  
Agency  
of the Czech Republic

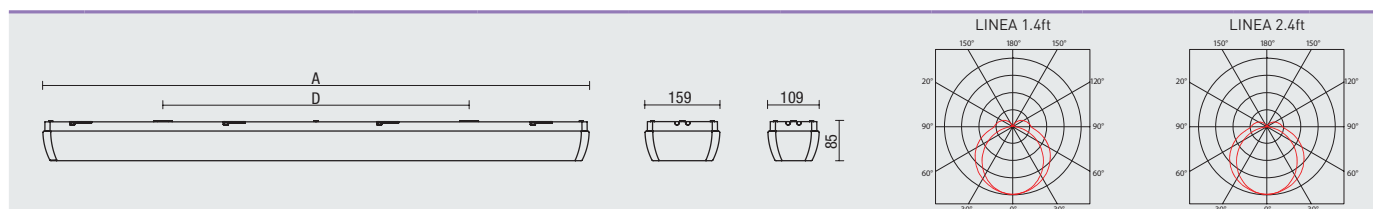


# LINEA



## TECHNICAL DESCRIPTION

- Light fitting protection: IP54
- Maximum ambient temperature:  $t_a = 35^\circ\text{C}$ ,  
Maximum ambient temperature:  $t_a = 25^\circ\text{C}$   
(version with emergency back-up source for 1 hour; M1h)
- Maximum system efficacy: 117 lm/W
- The watt and lumen values can, in accordance with valid standards, vary by  $\pm 7,5\%$
- Standard model - CRI > 80: 4000 K
- Lifetime: 50,000 hours / L80B20
- Diffuser: translucent polycarbonate (PC), UV stable, impact-resistant
- Body: white polycarbonate (PC), UV stable, impact-resistant
- Reflector: steel sheet, white colour (RAL 9003)
- Rotary cap: polyamide + 10 % glass fibre
- Sealing: polyurethane (PUR), foamed body groove
- Cable glands: rubber, SBS
- Terminal block: screwless, five-pole (basic version)
- Electric equipment: LED modules, current driver or current driver DALI



Code	Type	Luminous flux of LED modules [lm]	Luminous flux of light fitting [lm]	Power consumption [W]	System efficacy [lm/W]	Net weight [kg]	A [mm]	D [mm]
For ambient temperature $t_a = 35^\circ\text{C}$ - body: white polycarbonate - diffuser: translucent polycarbonate								
63140	LINEA 1.4ft 2600/840	2600	2290	21	109	1,9	1160	650
63150	LINEA 1.4ft 3200/840	3200	2920	25	117	1,9	1160	650
63160	LINEA 1.4ft 4400/840	4400	3770	33	114	1,9	1160	650
63240	LINEA 2.4ft 5200/840	5200	4270	39	109	2,5	1160	650
63250	LINEA 2.4ft 6400/840	6400	5320	48	111	2,5	1160	650
63260	LINEA 2.4ft 8800/840	8800	7210	65	111	2,5	1160	650

63150 LINEA 1.4ft 3200/840 = suitable replacement for T8 fl. tube light fitting SM 136 - 1x36W  
63160 LINEA 1.4ft 4400/840 = suitable replacement for T8 fl. tube light fitting SM 158 - 1x58W

63250 LINEA 2.4ft 6400/840 = suitable replacement for T8 fl. tube light fitting SM 236 - 2x36W  
63260 LINEA 2.4ft 8800/840 = suitable replacement for T8 fl. tube light fitting SM 258 - 2x58W

## LINEA

Diffuser made of translucent polycarbonate

Code	Type	M1h	DALI	DALI M1h	Senzor	DALI Senzor
63140	LINEA 1.4ft 2600/840	63144	63143	63147	x	x
63150	LINEA 1.4ft 3200/840	63154	63153	63157	x	x
63160	LINEA 1.4ft 4400/840	63164	63163	63167	x	x
63240	LINEA 2.4ft 5200/840	63244	63243	63247	63241	63248
63250	LINEA 2.4ft 6400/840	63254	63253	63257	63251	63258
63260	LINEA 2.4ft 8800/840	63264	63263	63267	63261	63268

Example of type marking: 63263 = LINEA 2.4ft 8800/840 DALI

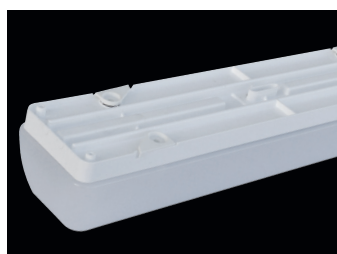
## LEGEND

DALI - version with digital dimmable driver DALI

M1h - emergency back-up source with operating time of 1 hour (SA) for both permanent and emergency illumination  
Batteries must be formatted before their putting into operation. Assembly instructions must be observed at installation.

## LIGHT FITTING ATTACHMENT AND ITS DETAILED VIEW

Directly to a ceiling or a wall with the use of screws



## LINEA



## LINEA ROUND

NEW



... interior circular, plastic, surface-mounting.

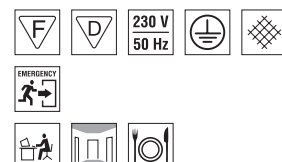
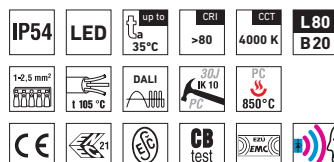
### USE

The Linea light fitting line can be used as a comprehensive solution for lighting of office buildings, schools, hospitals, libraries, as well as individual lighting of flat interiors, corridors, sanitary and welfare facilities.

Thanks to its high luminous efficiency and low power consumption, it can suitably replace compact fluorescent light fittings and fluorescent tube light fittings.

### ADVANTAGES

- Light fitting protection IP54
- Maximum ambient temperature up to  $t_a = 35^\circ\text{C}$
- Lifetime: 50,000 hours / L80B20
- Diffuser: translucent polycarbonate (PC) = high light transmission
- Body: white polycarbonate (PC) = high mechanical resistance
- Up to 50 % lower electricity consumption when compared to compact fluorescent tubes
- In DALI version: possibility of constant luminous flux for whole lifetime (CLO)
- Standard model - CRI > 80: 4000 K
- At request CRI > 80: 3000 K, 5000 K, 6500 K, CRI > 90: 3000 K, 4000 K
- It can be delivered in dimmable or emergency version
- Certification: ESĊ, ENEC, CB



## LINEA ROUND



## TECHNICAL DESCRIPTION

- Light fitting protection: IP54
- Maximum ambient temperature:  $t_a = 35^\circ\text{C}$ ,  
Maximum ambient temperature:  $t_a = 25^\circ\text{C}$   
(version with emergency back-up source for 1 hour; M1h)
- Maximum system efficacy: 120 lm/W
- The watt and lumen values can, in accordance with valid standards, vary by  $\pm 7,5\%$
- Standard model - CRI > 80: 4000 K
- Lifetime: 50,000 hours / L80B20
- Diffuser: translucent polycarbonate (PC), UV stable, impact-resistant
- Body: white polycarbonate (PC), UV stable, impact-resistant
- Reflector: steel sheet, white colour (RAL 9003)
- Rotary cap: polyamide + 10 % glass fibre
- Sealing: polyurethane (PUR), foamed body groove
- Cable glands: rubber, SBS
- Terminal block: screwless, five-pole (basic version)
- Electric equipment: LED modules, current driver or current driver DALI

Code	Type	Luminous flux of LED modules [lm]	Luminous flux of light fitting [lm]	Power consumption [W]	System efficacy [lm/W]	Net weight [kg]
For ambient temperature $t_a = 35^\circ\text{C}$ - body: white polycarbonate - diffuser: translucent polycarbonate						
63610	LINEA ROUND 1200/840	1200	1200	10	120	1,1
63620	LINEA ROUND 1800/840	1800	1500	13	115	1,1
63630	LINEA ROUND 2400/840	2400	2040	18	113	1,1
63640	LINEA ROUND 3600/840	3600	2930	27	109	1,1

63610 LINEA ROUND 1200/840 = suitable replacement for compact fluorescent lamps 1 x 18W  
 63620 LINEA ROUND 1800/840 = suitable replacement for compact fluorescent lamps 1 x 26W  
 63630 LINEA ROUND 2400/840 = suitable replacement for compact fluorescent lamps 2 x 18W  
 63640 LINEA ROUND 3600/840 = suitable replacement for compact fluorescent lamps 2 x 26W

## LINEA ROUND

Diffuser made of translucent polycarbonate

Code	Type	M1h	M3h	DALI	DALI M1h	Senzor	Senzor M1h
63610	LINEA ROUND 1200/840	63614	63615	63613	63617	63611	63616
63620	LINEA ROUND 1800/840	63634	63635	63633	63637	63621	63626
63630	LINEA ROUND 2400/840	63654	63655	63653	63657	x	x
63640	LINEA ROUND 3600/840	63664	63665	63663	63667	x	x

Example of type marking: 63637 = LINEA ROUND 1800/840 DALI M1h

## LEGEND

**DALI** – version with digital dimmable driver DALI  
**Senzor** – microwave motion sensor

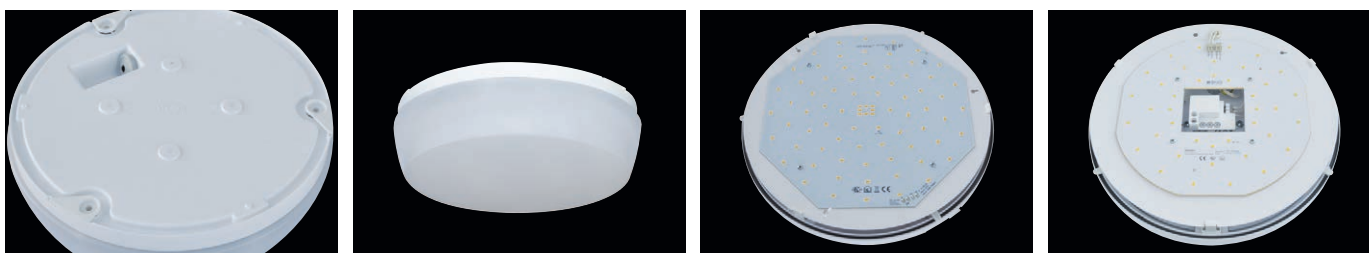
**M1h** – emergency back-up source with operating time of 1 hour (SA) for both permanent and emergency illumination

**M3h** – emergency back-up source with operating time of 3 hours (SA) for both permanent and emergency illumination

Batteries must be formatted before their putting into operation. Assembly instructions must be observed at installation.

## LIGHT FITTING ATTACHMENT AND ITS DETAILED VIEW

Directly to a ceiling or a wall with the use of screws



## LINEA SQUARE

NEW



... interior square, plastic, surface-mounting.

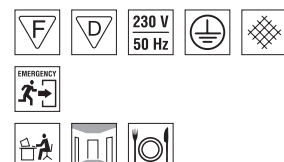
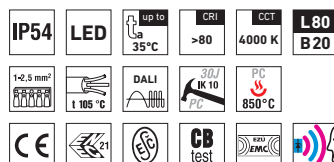
### USE

The Linea light fitting line can be used as a comprehensive solution for lighting of office buildings, schools, hospitals, libraries, as well as individual lighting of flat interiors, corridors, sanitary and welfare facilities.

Thanks to its high luminous efficiency and low power consumption, it can suitably replace compact fluorescent light fittings and fluorescent tube light fittings.

### ADVANTAGES

- Light fitting protection IP54
- Maximum ambient temperature up to  $t_a = 35^\circ\text{C}$
- Lifetime: 50,000 hours / L80B20
- Diffuser: translucent polycarbonate (PC) = high light transmission
- Body: white polycarbonate (PC) = high mechanical resistance
- Up to 50 % lower electricity consumption when compared to compact fluorescent tubes
- In DALI version: possibility of constant luminous flux for whole lifetime (CLO)
- Standard model - CRI > 80: 4000 K
- At request CRI > 80: 3000 K, 5000 K, 6500 K, CRI > 90: 3000 K, 4000 K
- It can be delivered in dimmable or emergency version
- Certification: ES $\checkmark$ , ENEC, CB

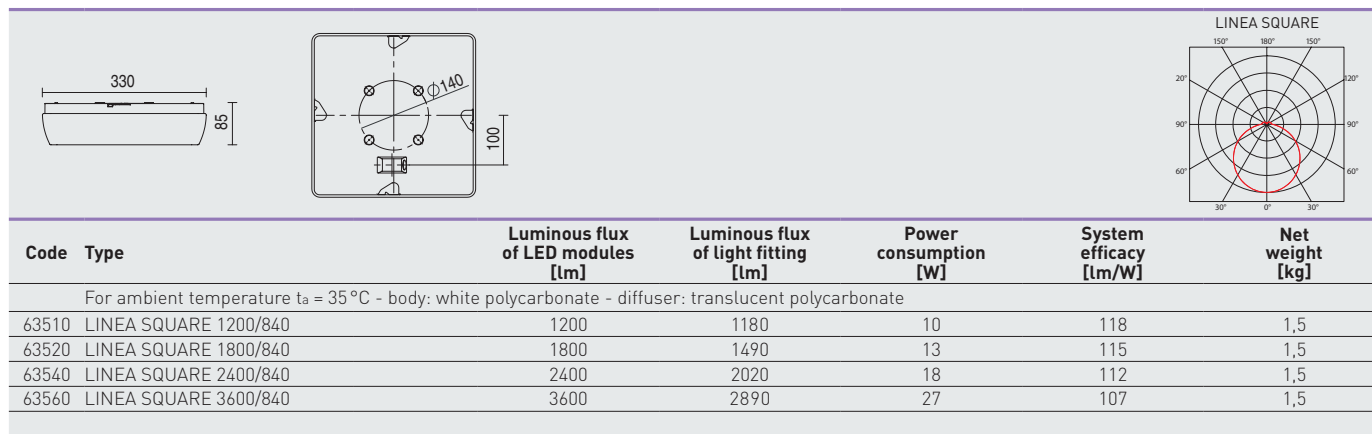


## LINEA SQUARE



## TECHNICAL DESCRIPTION

- Light fitting protection: IP54
- Maximum ambient temperature:  $t_a = 35^\circ\text{C}$ ,  
Maximum ambient temperature:  $t_a = 25^\circ\text{C}$   
(version with emergency back-up source for 1 hour; M1h)
- Maximum system efficacy: 118 lm/W
- The watt and lumen values can, in accordance with valid standards, vary by  $\pm 7,5\%$
- Standard model - CRI > 80: 4000 K
- Lifetime: 50,000 hours / L80B20
- Diffuser: translucent polycarbonate (PC), UV stable, impact-resistant
- Body: white polycarbonate (PC), UV stable, impact-resistant
- Reflector: steel sheet, white colour (RAL 9003)
- Rotary cap: polyamide + 10 % glass fibre
- Sealing: polyurethane (PUR), foamed body groove
- Cable glands: rubber, SBS
- Terminal block: screwless, five-pole (basic version)
- Electric equipment: LED modules, current driver or current driver DALI



63510 LINEA SQUARE 1200/840 = suitable replacement for compact fluorescent lamps  $1 \times 18\text{W}$   
 63520 LINEA SQUARE 1800/840 = suitable replacement for compact fluorescent lamps  $1 \times 26\text{W}$   
 63540 LINEA SQUARE 2400/840 = suitable replacement for compact fluorescent lamps  $2 \times 18\text{W}$   
 63560 LINEA SQUARE 3600/840 = suitable replacement for compact fluorescent lamps  $2 \times 26\text{W}$

## LINEA SQUARE

Diffuser made of translucent polycarbonate

Code	Type	M1h	M3h	DALI	DALI M1h	Senzor	Senzor M1h
63510	LINEA SQUARE 1200/840	63514	63515	63513	63517	x	x
63520	LINEA SQUARE 1800/840	63524	63525	63523	63527	x	x
63540	LINEA SQUARE 2400/840	63544	63545	63543	63547	x	x
63560	LINEA SQUARE 3600/840	63564	63565	63563	63567	x	x

Example of type marking: 63543 = LINEA SQUARE 2400/840 DALI

## LEGEND

**DALI** – version with digital dimmable driver DALI  
**Senzor** – microwave motion sensor

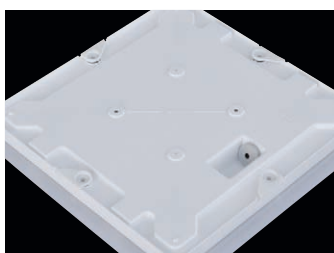
**M1h** – emergency back-up source with operating time of 1 hour (SA) for both permanent and emergency illumination

**M3h** – emergency back-up source with operating time of 3 hours (SA) for both permanent and emergency illumination

Batteries must be formatted before their putting into operation. Assembly instructions must be observed at installation.

## LIGHT FITTING ATTACHMENT AND ITS DETAILED VIEW

Directly to a ceiling or a wall with the use of screws



## LINEA SQUARE

