

# TITAN LED



... dustproof, waterproof, for high ceilings.

## USE

The light fitting is suitable for large operations with high ceilings, industrial outdoor and indoor roofed spaces, warehouses, workshops, sports areas, transport terminals and utility structures without a danger of explosion of gases, dust and combustible fumes.

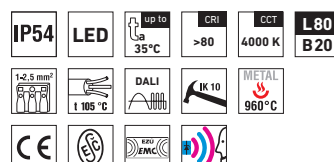
The light fitting is resistant to deformation, dust, splashing water and chemically aggressive environment.

Characteristics of the used tempered glass and its shattering power are controlled by the ČSN EN 12150-1 standard. For applications where spontaneous fracture means a higher safety risk, we recommend to use the version with the safety film (SF).

## ADVANTAGES

- Light fitting protection **IP54**
- Maximum ambient temperature up to **t<sub>a</sub> = 35 °C**
- Lifetime 50,000 hours / L80B20
- Diffuser: translucent or transparent tempered glass = high chemical resistance
- Body: steel sheet, white colour (RAL 9003) = high mechanical resistance
- Up to 45 % lower electricity consumption when compared to tubes T5
- In DALI version possibility of constant luminous flux for whole lifetime (CLO)
- Constant luminous flux even in ambient temperature of -20 °C

- Standard model - CRI > 80: 4000 K
- At request CRI > 80: 3000 K, 5000 K, 6500 K, CRI > 90: 3000 K, 4000 K
- It can be delivered in dimmable or emergency version
- Easy installation with the use of supply connector without necessity to open light fitting
- Certification: ENEC

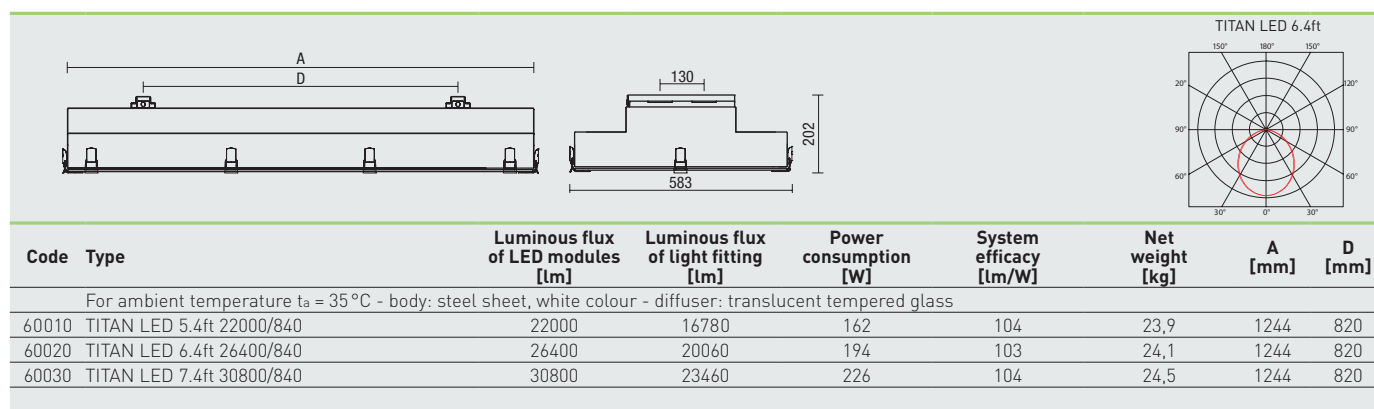


## TITAN LED



## TECHNICAL DESCRIPTION

- Light fitting protection: IP54
- Maximum ambient temperature:  $t_a = 35^\circ\text{C}$ ,  
Maximum ambient temperature:  $t_a = 25^\circ\text{C}$   
(version with emergency back-up source for 1 or 3 hours; M1h, M3h)
- Maximum system efficacy: 104 lm/W
- The watt and lumen values can, in accordance with valid standards, vary by  $\pm 7,5\%$
- Standard model - CRI > 80: 4000 K
- Lifetime: 50,000 hours / L80B20
- Diffuser: translucent tempered glass, chemically resistant
- Body: steel sheet, white colour (RAL 9003), impact-resistant
- Clips: FeZn with blocking, it serves also for suspension of glass when light fitting is open
- Sealing: EPDM attached to light fitting body
- Terminal block: interconnecting connector
- Installation: package contains steel two-piece slides, white colour (RAL 9003)
- Electric equipment: LED modules, current driver or current driver DALI



## TITAN LED

Diffuser made of translucent tempered glass

Code	Type	M1h	M3h	DALI	DALI M1h	DALI M3h
60010	TITAN LED 5.4ft 22000/840	60014	60015	60013	60017	60019
60020	TITAN LED 6.4ft 26400/840	60024	60025	60023	60027	60029
60030	TITAN LED 7.4ft 30800/840	x	x	60033	x	x

Example of type marking: 60023 = TITAN LED 6.4ft 26400/840 DALI

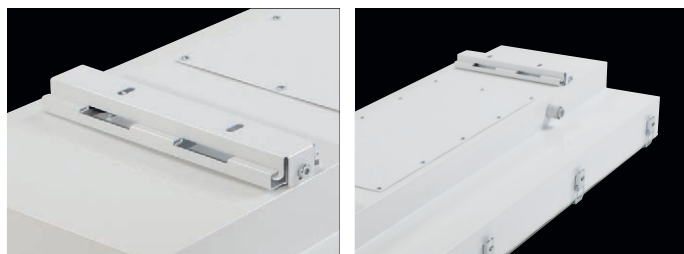
## LEGEND

**DALI** – version with digital dimmable driver DALI

**M1h** – emergency back-up source with operating time of 1 hour (SA) for both permanent and emergency illumination  
**M3h** – emergency back-up source with operating time of 3 hours (SA) for both permanent and emergency illumination  
 Batteries must be formatted before their putting into operation. Assembly instructions must be observed at installation.

## LIGHT FITTING ATTACHMENT

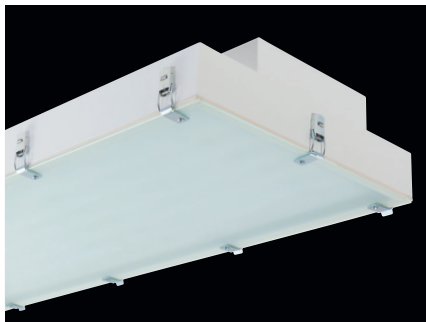
Suspension with the use of two-piece steel slides



## LIGHT FITTING DETAILED VIEW

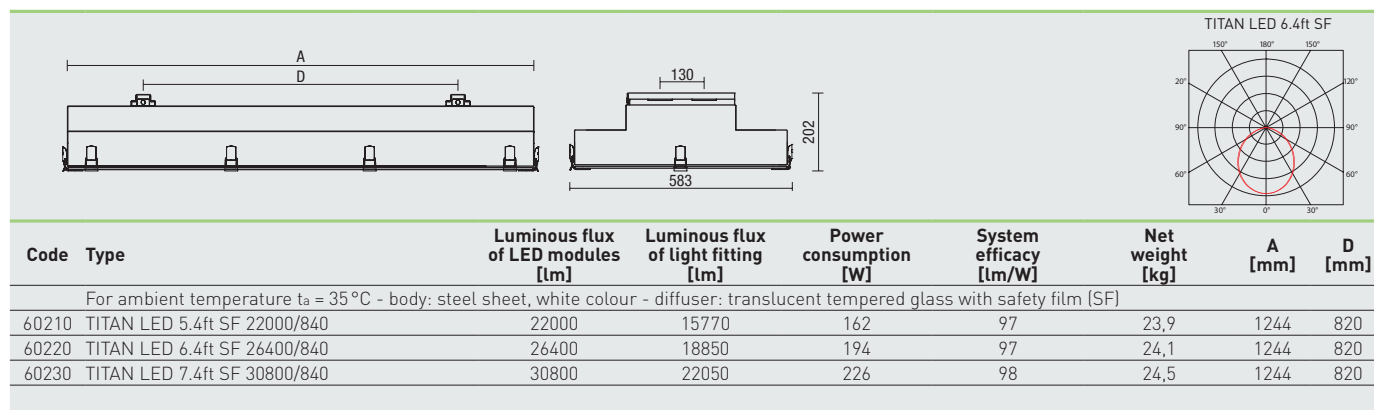


## TITAN LED SF



## TECHNICAL DESCRIPTION

- Light fitting protection: IP54
- Maximum ambient temperature:  $t_a = 35^\circ\text{C}$ ,  
Maximum ambient temperature:  $t_a = 25^\circ\text{C}$   
(version with emergency back-up source for 1 or 3 hours; M1h, M3h)
- Maximum system efficacy: 98 lm/W
- The watt and lumen values can, in accordance with valid standards, vary by  $\pm 7,5\%$
- Standard model - CRI > 80: 4000 K
- Lifetime: 50,000 hours / L80B20
- Diffuser: translucent tempered glass with safety film (SF), chemically resistant
- Body: steel sheet, white colour (RAL 9003), impact-resistant
- Clips: FeZn with blocking, it serves also for suspension of glass when light fitting is open
- Sealing: EPDM attached to light fitting body
- Terminal block: interconnecting connector
- Installation: package contains steel two-piece slides, white colour (RAL 9003)
- Electric equipment: LED modules, current driver or current driver DALI



## TITAN LED SF

Diffuser made of translucent tempered glass with safety film (SF)

Code	Type	M1h	M3h	DALI	DALI M1h	DALI M3h
60210	TITAN LED 5.4ft SF 22000/840	60214	60215	60213	60217	60219
60220	TITAN LED 6.4ft SF 26400/840	60224	60225	60223	60227	60229
60230	TITAN LED 7.4ft SF 30800/840	x	x	60233	x	x

Example of type marking: 60223 = TITAN LED 6.4ft SF 26400/840 DALI

## LEGEND

DALI – version with digital dimmable driver DALI

SF – diffuser made of translucent tempered glass with safety film

M1h – emergency back-up source with operating time of 1 hour (SA) for both permanent and emergency illumination

M3h – emergency back-up source with operating time of 3 hours (SA) for both permanent and emergency illumination  
Batteries must be formatted before their putting into operation. Assembly instructions must be observed at installation.

## LIGHT FITTING ATTACHMENT

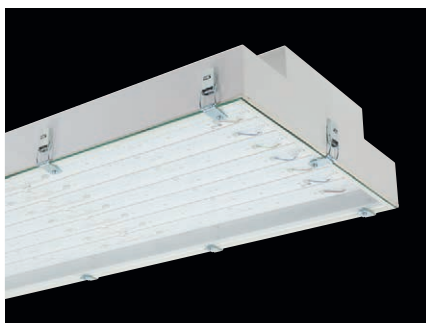
Suspension with the use of two-piece steel slides



## LIGHT FITTING DETAILED VIEW

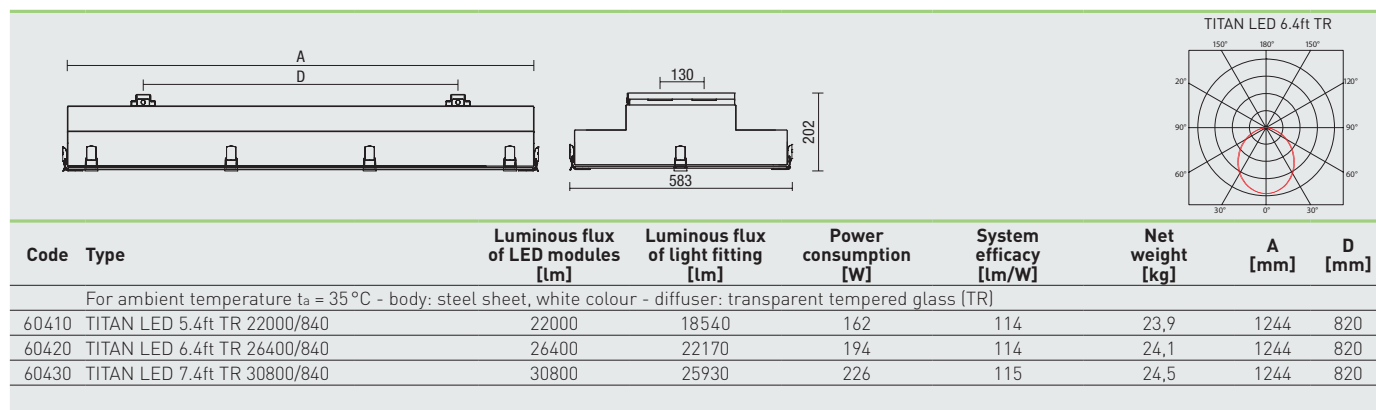


## TITAN LED TR



## TECHNICAL DESCRIPTION

- Light fitting protection: IP54
- Maximum ambient temperature:  $t_a = 35^\circ\text{C}$ ,  
Maximum ambient temperature:  $t_a = 25^\circ\text{C}$   
(version with emergency back-up source for 1 or 3 hours; M1h, M3h)
- Maximum system efficacy: 115 lm/W
- The watt and lumen values can, in accordance with valid standards, vary by  $\pm 7,5\%$
- Standard model - CRI > 80: 4000 K
- Lifetime: 50,000 hours / L80B20
- Diffuser: transparent tempered glass, chemically resistant
- Body: steel sheet, white colour (RAL 9003), impact-resistant
- Clips: FeZn with blocking, it serves also for suspension of glass when light fitting is open
- Sealing: EPDM attached to light fitting body
- Terminal block: interconnecting connector
- Installation: package contains steel two-piece slides, white colour (RAL 9003)
- Electric equipment: LED modules, current driver or current driver DALI



## TITAN LED TR

Diffuser made of transparent tempered glass (TR)

Code	Type	M1h	M3h	DALI	DALI M1h	DALI M3h
60410	TITAN LED 5.4ft TR 22000/840	60414	60415	60413	60417	60419
60420	TITAN LED 6.4ft TR 26400/840	60424	60425	60423	60427	60429
60430	TITAN LED 7.4ft TR 30800/840	x	x	60433	x	x

Example of type marking: 60423 = TITAN LED 6.4ft TR 26400/840 DALI

## LEGEND

DALI – version with digital dimmable driver DALI

TR – diffuser made of transparent tempered glass

M1h – emergency back-up source with operating time of 1 hour (SA) for both permanent and emergency illumination

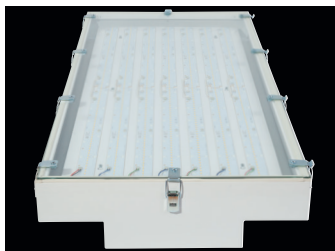
M3h – emergency back-up source with operating time of 3 hours (SA) for both permanent and emergency illumination  
Batteries must be formatted before their putting into operation. Assembly instructions must be observed at installation.

## LIGHT FITTING ATTACHMENT

Suspension with the use of two-piece steel slides



## LIGHT FITTING DETAILED VIEW

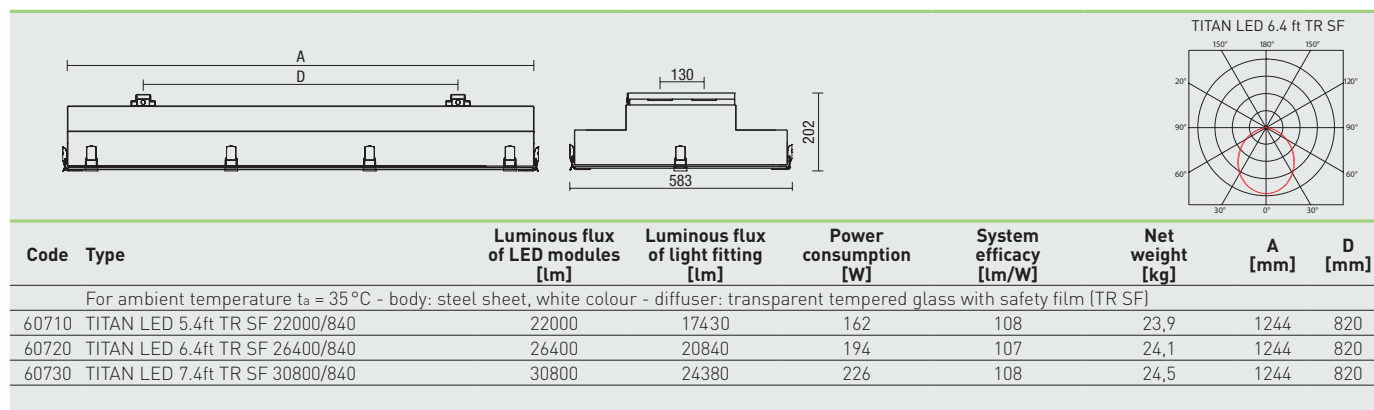


## TITAN LED TR SF



## TECHNICAL DESCRIPTION

- Light fitting protection: IP54
- Maximum ambient temperature:  $t_a = 35^\circ\text{C}$ ,  
Maximum ambient temperature:  $t_a = 25^\circ\text{C}$   
(version with emergency back-up source for 1 or 3 hours; M1h, M3h)
- Maximum system efficacy: 108 lm/W
- The watt and lumen values can, in accordance with valid standards, vary by  $\pm 7,5\%$
- Standard model - CRI > 80: 4000 K
- Lifetime: 50,000 hours / L80B20
- Diffuser: transparent tempered glass with safety film (SF), chemically resistant
- Body: steel sheet, white colour (RAL 9003), impact-resistant
- Clips: FeZn with blocking, it serves also for suspension of glass when light fitting is open
- Sealing: EPDM attached to light fitting body
- Terminal block: interconnecting connector
- Installation: package contains steel two-piece slides, white colour (RAL 9003)
- Electric equipment: LED modules, current driver or current driver DALI



## TITAN LED TR SF

Diffuser made of transparent tempered glass with safety film (TR SF)

Code	Type	M1h	M3h	DALI	DALI M1h	DALI M3h
60710	TITAN LED 5.4ft TR SF 22000/840	60714	60715	60713	60717	60719
60720	TITAN LED 6.4ft TR SF 26400/840	60724	60725	60723	60727	60729
60730	TITAN LED 7.4ft TR SF 30800/840	x	x	60733	x	x

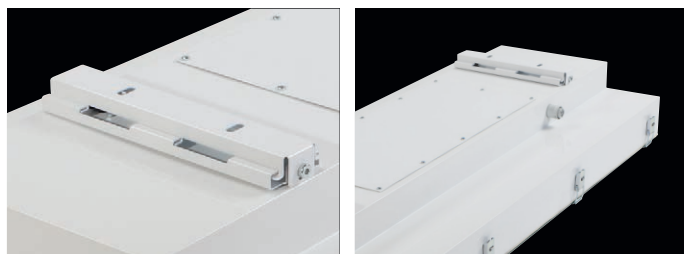
Example of type marking: 60723 = TITAN LED 6.4ft TR SF 26400/840 **DALI**

## LEGEND

**DALI** – version with digital dimmable driver DALI**TR SF** – diffuser made of transparent tempered glass with safety film**M1h** – emergency back-up source with operating time of 1 hour (SA) for both permanent and emergency illumination**M3h** – emergency back-up source with operating time of 3 hours (SA) for both permanent and emergency illumination  
Batteries must be formatted before their putting into operation. Assembly instructions must be observed at installation.

## LIGHT FITTING ATTACHMENT

Suspension with the use of two-piece steel slides



## LIGHT FITTING DETAILED VIEW

